

ANFiSAN®

ANFiSAN ANKARA FIRÇA PLAS.MAK.TEM.EK.İM.OTO.İ.İ.P.SAN.TİC.LTD.ŞTİ.

*For Clean Environment
Choose ANFiSAN..*



www.anfisan.com.tr



ANFİSAN®

ANFİSAN ANKARA FIRÇA PLAS.MAK.TEM.EK.İM.OTO.İ.İ.P.SAN.TİC.LTD.ŞTİ.

Since 2008, the company ANFİSAN (ANKARA FIRÇA MAKİNA SANAYİ) is engaged in the production, maintenance, servicing brushes and its spare parts for road purification technique. We manufacture kinds of brushes for several branches (machinery industry, glass industry, brushes for concrete industry) with high quality and guarantee. Our main purpose is satisfaction of our customers. Our products are competitive in the market due to the latest manufacturing techniques and systematic quality control. Products have national and international quality certificates. In a short time we have gained considerable experience in providing timely service to our customers. The main priorities of the ANFİSAN company are professionalism, quality and results.

Our Difference is in The Experience and Quality.

Middle Brush ERDEMLİ

- It is a middle brush for the cars of brand Erdemli (Turkey)
- The brush should be install to the 125mm pipe that in middle part of machine.
- The dimension of the brush is 1300mm.
- We can manufacture in different sizes and diametres.
- Brush produce in the form of a disk.
- These disks are combined into 2 or 7 parts.
- The guarantee terms for Erdemli brushes are 120 working hours.
- Brushes are produced from mixture of plastic and wire.



Side Steel Brush (450mm)

- Brush consist of 3 levels of wires.
- Produced from the galvanize or black steel wire.
- We can offer panel from plastic or waterproof materials
- The weight of brush is 14 kg (+/- 100 gr.)
- Our raw materials have ISO CE quality certificates.



- The guarantee terms for galvanize brushes are 200 working hours and for steel brushes are 120 working hours.



Middle Square Brush

- It is a middle brush for the cars of brand Bucher Schörling (Germany).
- The brush should be install to the 45x45sq.m gear in underside of machine.
- Dimension of brush is 1500mm, full set for machine are 2 brushes 750mm each one.
- Sizes for brushes and external caps can be specified by customers.
- The guarantee terms for square brushes are 120 working hours.



Side Steel Brush (400 mm)

- Brush consist of 4 levels of wires.
- Produced from the galvanize or black steel wire.
- We can offer panel from plastic or waterproof materials.
- The weight of brush is 13 kg (+/- 100 gr.)
- Our raw materials have ISO CE quality certificates.



- The guarantee terms for galvanize brushes are 200 working hours and for steel brushes are 120 working hours



Middle Brush (130 mm)

- It is a middle brush for the cars of brand Erdemli (Turkey) and Johnston (UK).
- The brush should be install to the 130mm gear in underside of machine.
- Inside of brush consist of 2 cores.
- Sizes for internal and external caps are 130 and 390mm, but can be specified by customers.
- According to customers request we produce single or related brushes.
- The guarantee terms for prduct are 120 working hours.



Side Brush (300mm)

- It is a middle brush for the cars of brand Erdemli (Turkey) and Johnston (UK), dimension is 310mm, consist of wire's levels.
- Produced from the galvanize or black steel wire.
- We can offer panel from waterproof materials.
- The weight of brush is 8 kg (+/- 100 gr.)
- Our raw materials have ISO CE quality certificates.



AZURA FRONT BRUSH

- According to customers request we can produce from plastic or mixture of plastic and steel



RAVO FRONT BRUSH

- According to customers request we can produce from plastic or mixture of plastic and steel



KOLUMAN SWEEPERS SOCKET BRUSH

- According to customers request we can produce from plastic or mixture of plastic and steel.

Special production for Koluman Sweepers brand.



FLOOR SWEEPING BRUSH

- According to customers request we can produce from plastic or mixture of plastic and steel.



FLOOR SWEEPING BRUSH

- According to customers request we can produce from plastic or mixture of plastic and steel.



FLOOR SWEEPING BRUSH

- According to customers request we can produce from plastic or mixture of plastic and steel.



DIFFERENT TYPES OF FRONT BRUSHES

- We are producing brushes for Schmitz, Schörling, Yolbak, Asmaksan, Vimpo, Bobcat cleaner vehicles.
- According to customers request we can produce brushes from plastic or steel in different sizes, 130X390 – 130X400 – 180X600 – 180X800 – 255X600 – 255X800.
- Sizes for internal and external caps can be specified by customers.



SPECIAL PRODUCTION OF TYPES OF THE BRUSHES

- All our brushes have guarantee terms.



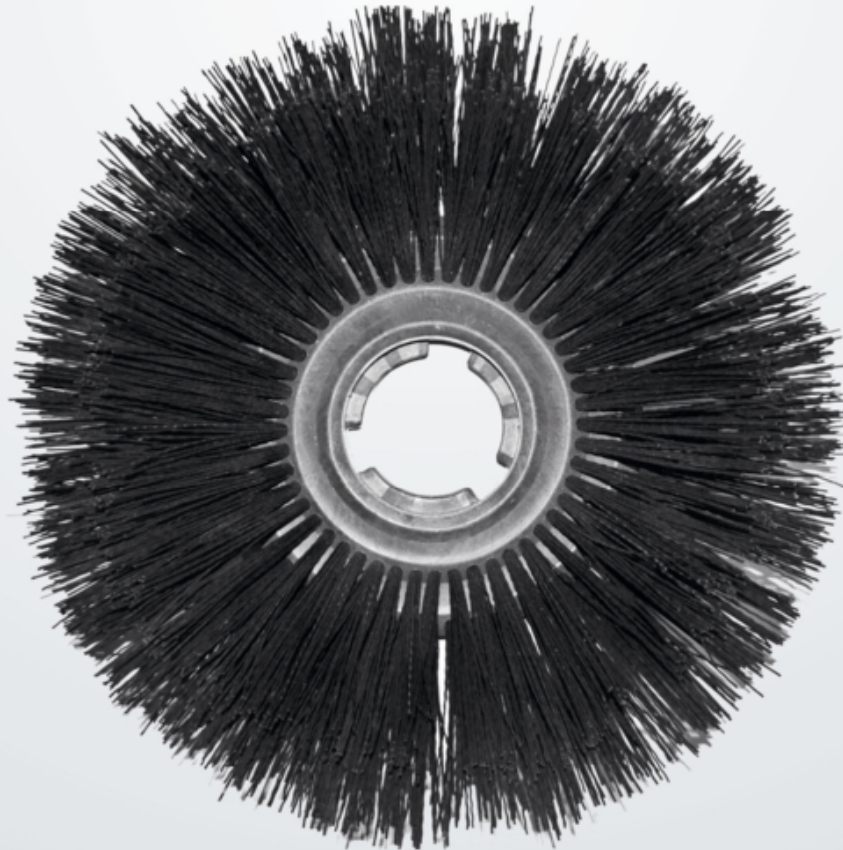
TİSAN BRUSHES

- According to customers request we can produce side, front and middle brushes from plastic or mixture of plastic and steel.



GREEN MACHINES 414 RS

- Brushes are using in GREEN MACHINES 414RS systems



PLASTIC BROOMS

- These products are more practical in using than wood brooms.
- We can add plastic scoop as well.
- According to request we can produce from mixture of plastic and steel.



LIVESTOCK BRUSH-SCRATCHERS

- Brush-scratchers should be install in cattle care machines.
- Brushes are producing with 40x40 or 45x45 holes for fixing.
- We have wide range of brush dimensions.



WHEELS

- Wheels are using in Vacuum cleaner vehicles.
- We can produce it for different brands.
- It has long durability within high pressure.



ERDEMLİ VACUUM WHEELS

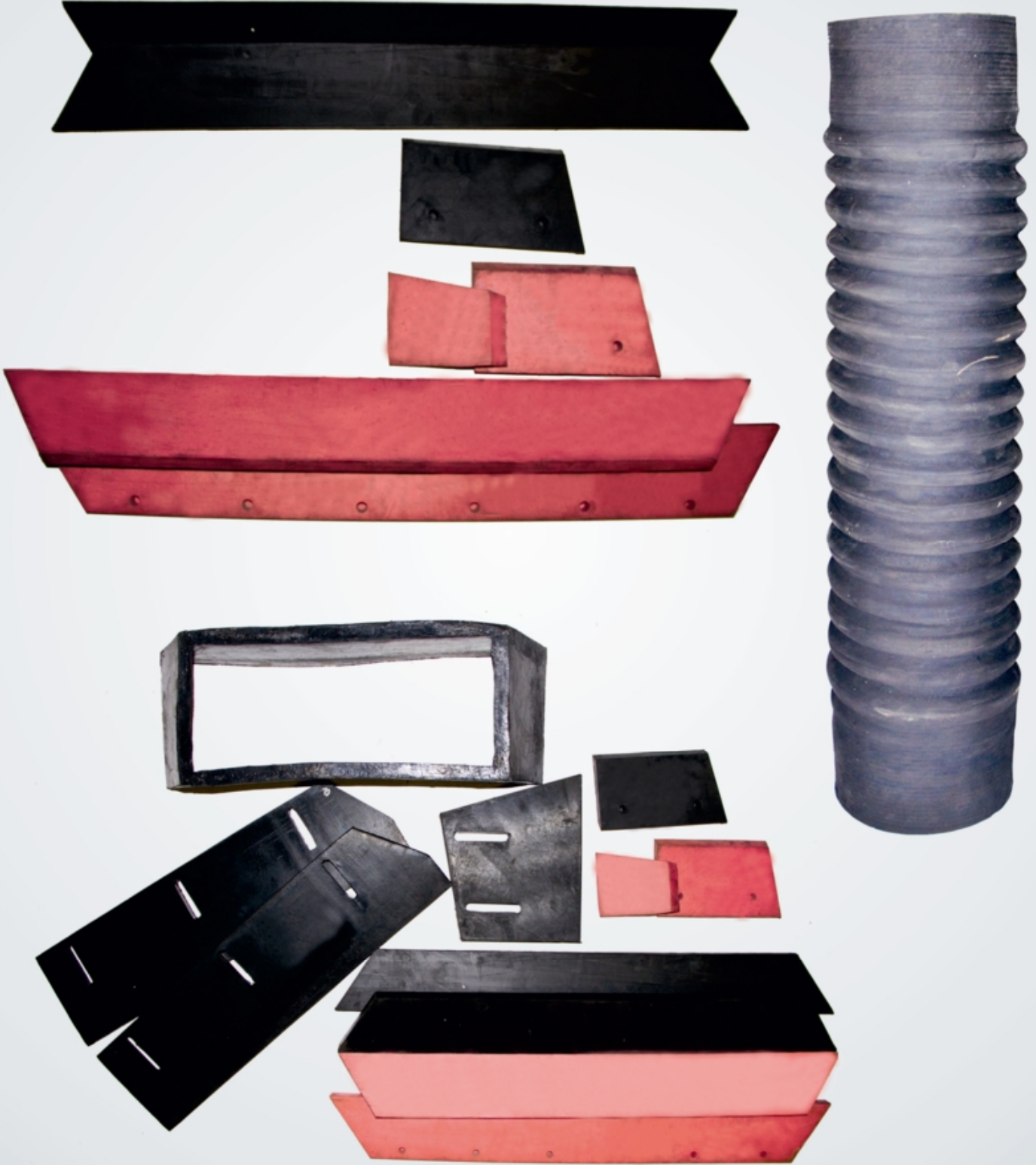
JOHNSTON VACUUM WHEELS

SCHORLING VACUUM WHEELS



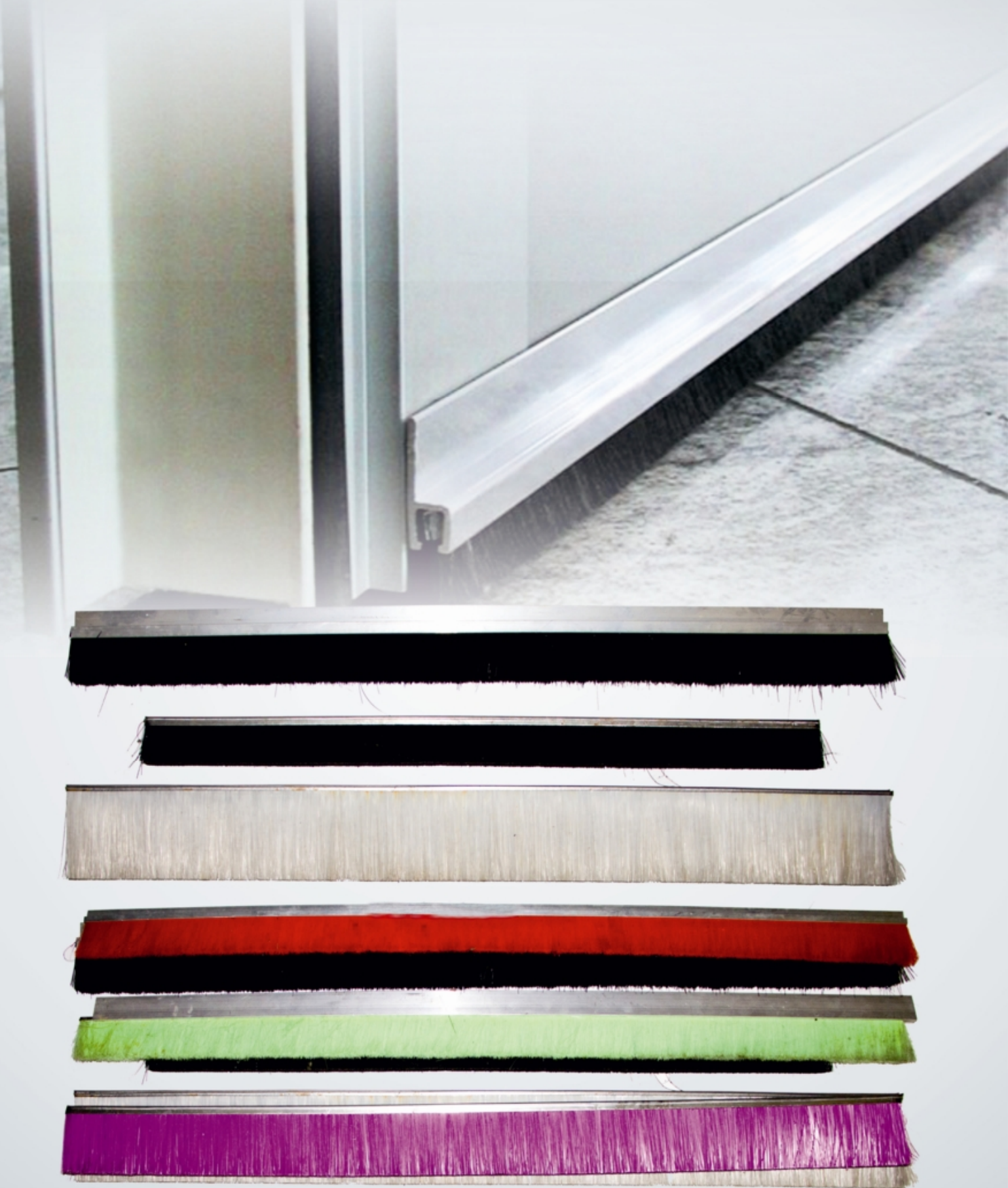
SPARE PARTS

- We can offer ally types of spare parts for vacuum and non-vacuum cleaner vehicles.



DOOR SIX BRUSHES

- We have wide range of sizes, colors and different materials for these type brushes.



TECHNICAL SERVICE OF CLEANER VEHICLES

- Our experienced staff is able to serve all types vacuum and non-vacuum cleaner vehicles.



www.anfisan.com.tr







®

ANFISAN

**OUR DIFFERENCE IS
IN THE EXPERIENCE AND QUALITY**

Keresteciler Sitesi C Blok 1135 Sk. (Eski 231 Sk.) No: 6 Ostim - Yenimahalle / ANKARA

Tel: 0312.263 47 26 - 354 02 71 - 818 00 60 - 61 Faks: 0312.354 02 31

export@anfisan.com.tr - anfisan@anfisan.com.tr

www.anfisan.com.tr